

Joint Strategic Needs Assessment (JSNA) Update - Static Overview

Version 1.0



Introduction

- In September 2023, the Health and Wellbeing Board approved the plan to refresh Barnet's Joint Strategic Needs Assessment (JSNA)
- The updated JSNA is a digital product and is available here: [Joint Strategic Needs Assessment 2024 | Barnet Open Data](#)
- This document provides a high-level, static overview of the refreshed JSNA, covering the layout, topics included and infographics.

Joint Strategic Needs Assessment (JSNA)

The Barnet Joint Strategic Needs Assessment (JSNA) presents data to support the local authority, local NHS organisations and other public and private organisations including the voluntary sector, assess the current and future health, care and wellbeing needs of the borough and our community to inform local decision making.

A comprehensive picture of the borough is presented through a range of data and intelligence relating to demography, and factors that influence our health, wellbeing, and behaviours.

The JSNA is based on [Our Plan for Barnet](#)'s three pillars of Caring for People, our Places and the Planet. The different JSNA chapters can be viewed below by selecting the relevant pillar.

[About the JSNA](#)[External Resources](#)

JSNA Landing Page

- The JSNA is hosted on Barnet's open data platform: [OpenBarnet](#)
- The JSNA landing page provides background information about the JSNA as well as links to external resources.
- The JSNA is structured around the three main pillars of the Barnet Plan; People, Places and Planet.



People



Places



Planet

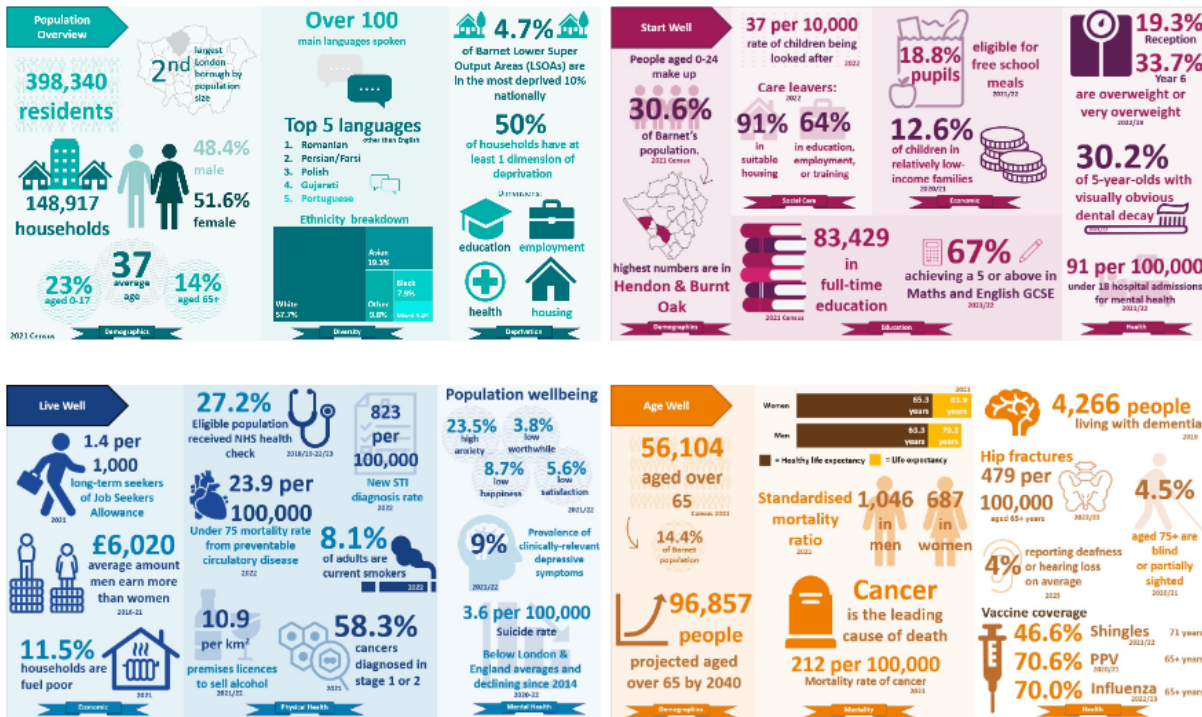
People

Barnet is located in North London. It is the second largest London borough by population with 398,344 residents as of the 2021 Census.

This chapter discusses Barnet's population structure, life expectancy including healthy life expectancy, mortality, and education and employment in Barnet.



[Back to JSNA menu](#)



- The landing pages of People, Places and Planet all follow a consistent layout.
- A brief introduction to the subject, in this example, People.
- This introduction is followed by summary infographics which are available to view and download.
- This is then followed by links to the individual topic pages. For People, these topics are grouped into:
 - Population Overview
 - Start Well
 - Live Well
 - Age Well
 - Communities and Neighbourhoods

Employment

[Back to People](#)

The Employment Dashboard details employment data in Barnet benchmarked against London and England with demographic breakdowns included. The dashboard is organised into two sections:

- **Labour Supply and Demand:** indicators for (un)employment rate, employees by industry, and wages.
- **Benefits and Financial Support:** indicators for universal credit, employment and support allowance, carers allowance, attendance allowance, and personal independence payment.

Headline Figures

- Between October 2022 and September 2023, **28.8%** of residents aged 16-64 years in Barnet were economically inactive – this is **higher** than both the London and England average.
- Specific demographic groups that have shown an increase in economic inactivity are males and ethnic minority groups.
- The predominant employment sector in Barnet is **healthcare**, representing a higher proportion of workers than both London and England.
- Residents who are aged 35 to 49 years, females and unemployed residents in Barnet were most likely to claim Universal Credit.



Employment Topic Page

- Individual topic pages also follow a consistent format.
- At the top of the page is a brief introduction to the topic, in this example, Employment. This includes headline figures and trend comparisons.
- This introduction is followed by data dashboard which allows a user to self-serve and explore the available data.
- This is then followed by an analytical narrative which includes content provided by a subject matter expert.

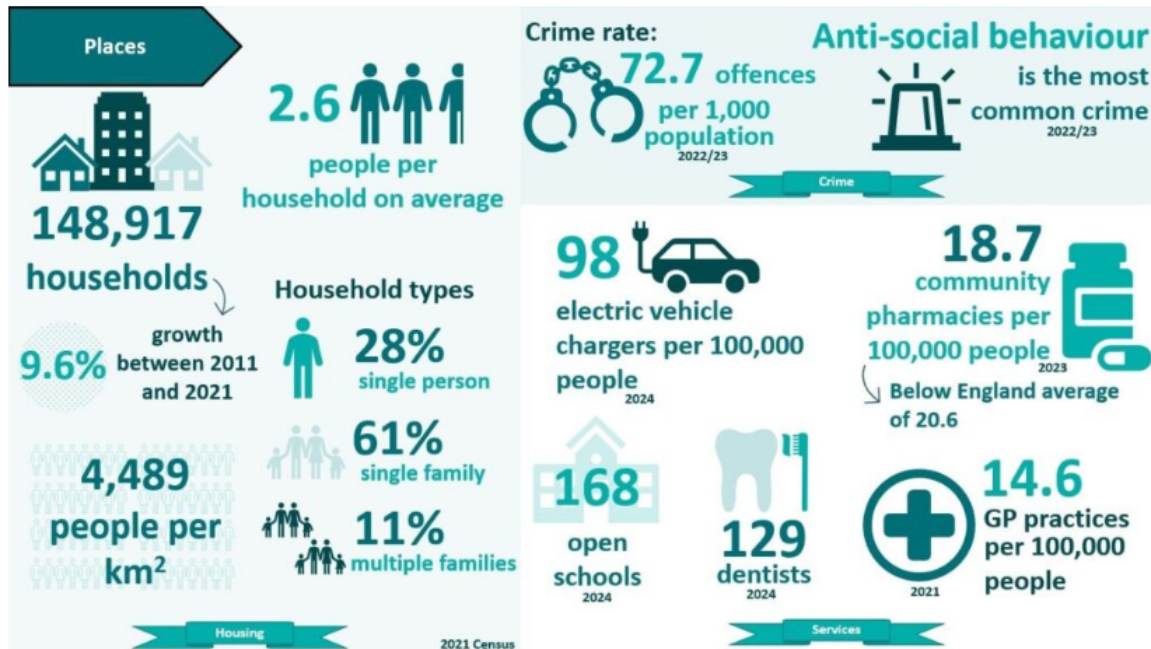
Places

Barnet is an ambitious London suburb – a vibrant and fun place to live, work and visit. There are many different towns, neighbourhoods, and communities within Barnet.

This chapter discusses these places throughout Barnet, focusing on houses & accommodation, crime, and transport.



[Back to JSNA menu](#)



Places Landing Page

- This is the landing page for Places.
- It follows the same layout as the People and Planet pages. There is an introduction followed by a summary infographic.
- This is then followed by links to the individual topic pages. For Places, these topics are grouped into:
 - Housing and Accommodation
 - Transport
 - Crime
 - Services

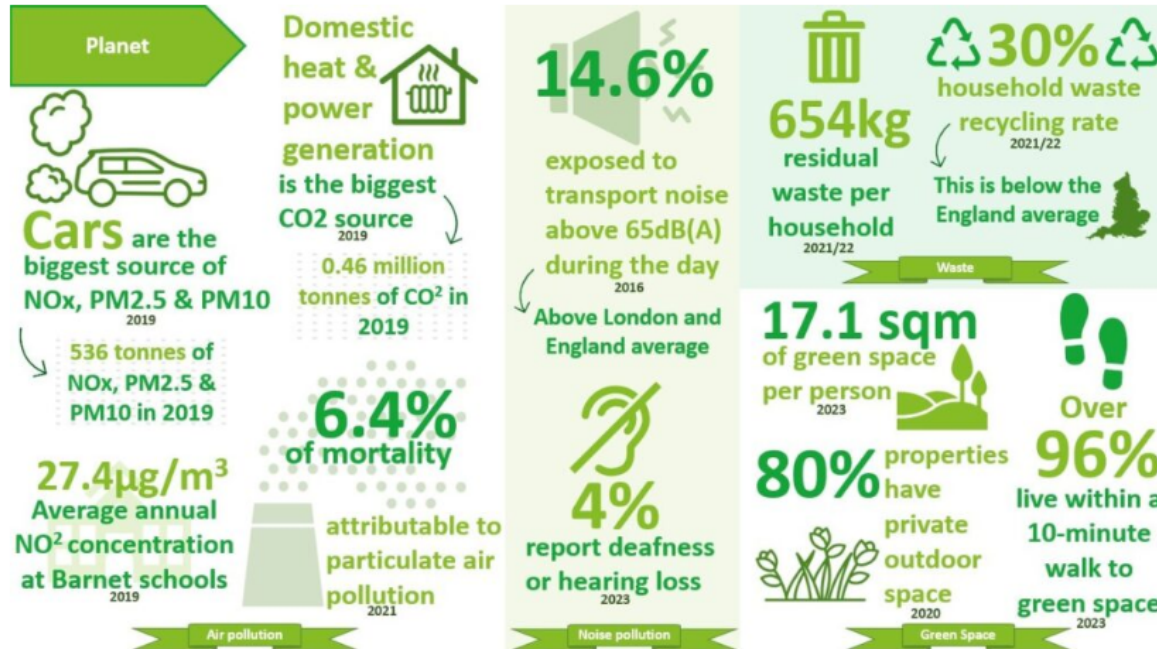
Planet

Barnet is working together with local people, local communities, and local businesses on a Journey to Net Zero, with an ambitious target to be a net zero council by 2030 and a net zero borough by 2042.

This chapter discusses pollution, waste management, and green spaces.



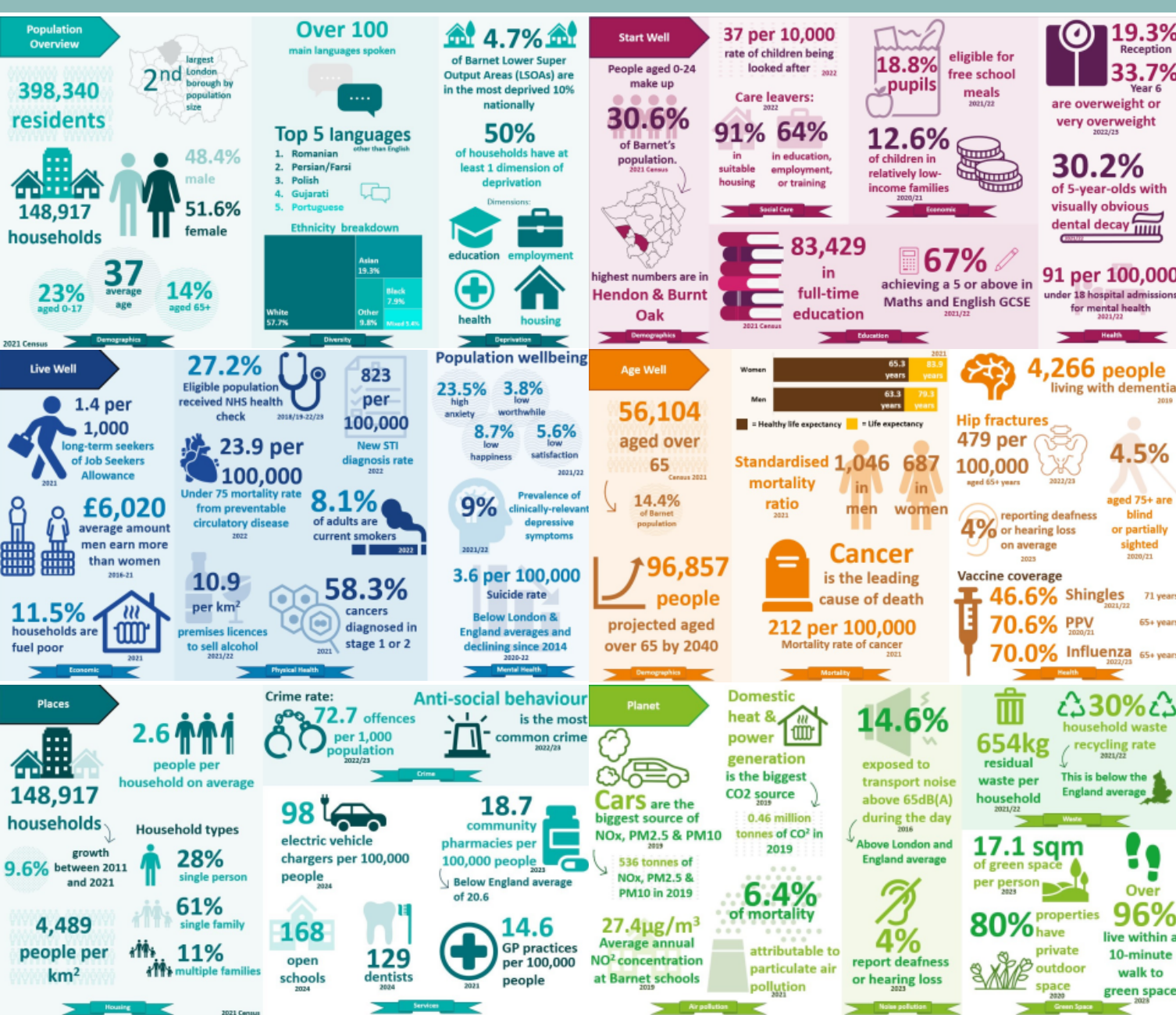
[Back to JSNA menu](#)



- This is the landing page for Planet.
- It follows the same layout as the People and Planet pages. There is an introduction followed by a summary infographic.
- This is then followed by links to the individual topic pages. For Places, these topics are grouped into:
 - Pollution and Waste
 - Green Spaces

Infographics

- A series of infographics have been created for each of the subject areas of the JSNA.
- These infographics provide a high-level figures about a subject and topic in an easy to absorb format.
- These infographics can be downloaded and included in any strategy and/or report as required.



Topics

The following topics are included in the updated JSNA:

People

- Population Overview
 - Population Tool
 - Ward Profile
 - 2021 Census Briefings
- Start Well
 - Children and Young People
 - Family Friendly Index
 - National Childhood Measurement Programme
 - Oral Health
- Live Well
 - Cost of Living
 - Communities Dashboard
 - Inequalities Dashboard
 - Employment
 - Cancer Screening
 - Mental Health
 - Sexual Health
 - Social Loneliness
 - Substance Misuse
 - Suicide and Self-Harm
- Age Well
 - Ageing Well
 - Dementia Needs Assessment
 - Mortality

Places

- Housing and Accommodation
 - 2021 Census Housing Briefing
 - IMD Postcode Checker
 - Deprivation Data Tool
- Transport
 - Cycling Routes
 - Electric Vehicle Charging Points
 - Road Maintenance
- Crime
 - Crime Dashboard
 - Police Open Data
- Services
 - Local Insight – Services Map
 - Pharmaceutical Needs Assessment

Planet

- Pollution and Waste
 - Air and Noise Pollution
 - Waste Management Data
- Green Spaces
 - Green Spaces Index 2023
 - Mayor of London – Green Infrastructure Map
 - Natural England – Green Spaces Map